

## Original Article

# TOPK promotes cell migration and is associated with poor prognosis in gastric cancer

Changlei Su<sup>1\*</sup>, Bomiao Zhang<sup>2\*</sup>, Kejin Huang<sup>3</sup>, Hongqun Zheng<sup>4</sup>, Dongdong Yang<sup>4</sup>, Lingyu Sun<sup>4</sup>, Jinxue Tong<sup>4</sup>, Xiaofeng Jiang<sup>5</sup>, Hongyan Liang<sup>5</sup>, Li Xue<sup>5</sup>, Qifan Zhang<sup>4</sup>

<sup>1</sup>Department of General Surgery, The Second Hospital of Harbin Medical University, Harbin, China; Departments of <sup>2</sup>Colorectal Surgery, <sup>3</sup>Gynecology, The Third Affiliated Hospital of Harbin Medical University, Harbin, China; Departments of <sup>4</sup>Surgical Oncology, <sup>5</sup>Clinical Laboratory, The Fourth Hospital of Harbin Medical University, Harbin, China. \*Equal contributors.

Received December 7, 2016; Accepted December 25, 2016; Epub March 1, 2017; Published March 15, 2017

**Abstract:** T-LAK (lymphokine-activated killer T) cell-originated protein kinase (TOPK) is a MAPKK (mitogen-activated protein kinase kinase)-like protein kinase, which interacts with some tumor suppressor proteins and may play some important roles in the activation of T-LAK cells and signaling for the mediation of their cytotoxic functions against cancer cells. Here, in this study, a retrospective analysis of 79 resected gastric cancer patients was carried out to examine TOPK expression by immunohistochemistry. SGC7901 cell lines with depletion of endogenous TOPK were used to investigate if TOPK could promote cell migration. We found that the positive frequency of TOPK in cancer cells was 92.4%, whereas no TOPK expression was detected in non-cancerous mucosa. With increasing expression of TOPK, there was a significant increase in pT classification (P=0.0319) and pN classification (P=0.0337). In univariate analyses, AJCC stage (P<0.0001), pT classification (P<0.0001), pN classification (P<0.0001), differentiation (P=0.0268), peritoneal metastasis (P=0.0002) and gross features (P=0.0100) were significant prognostic factors. In multivariate analysis, AJCC stage was an independent predictor of survival (P<0.0001). Reductions of TOPK in SGC7901 cells were associated with decreases in cell invasion (P=0.0102) and migration (P=0.0278). Taken together, TOPK overexpression is associated with poor prognosis in GC. TOPK promotes gastric cancer cell migration.

**Keywords:** Gastric cancer, prognosis, TOPK, AJCC classification

## Introduction

Gastric cancer (GC) is one of the most common cancers worldwide, and almost more than 40% of GC cases occur in China [1]. In spite of progress in the surgical treatment and chemotherapy, the prognosis of advanced GC patients remains poor [2]. Thus, it is important to investigate better biomarkers of GC for advances in treatment of this disease in the future.

T-LAK cell-originated protein kinase (TOPK), also known as PDZ-binding kinase (PBK), was isolated from a lymphokine-activated killer T (T-LAK) cell subtraction library [3]. TOPK is a MAPKK (mitogen-activated protein kinase kinase)-like protein kinase, which may play some important roles in the activation of T-LAK cells and signaling for the mediation of their cytotoxic functions against cancer cells [3]. Because it

functions as an enhancer of CDK1 (cyclin-dependent kinase 1)/cyclin B1-dependent phosphorylation of PRC1, TOPK has been presumed to be a promoter of cytokinesis [4]. Moreover, TOPK regulates cell-cycle by phosphorylating p97 and LGN/GPSM2 (Leu-Gly-Asn repeat-enriched protein/G-protein signaling modulator 2), which regulated spindle disassembly and formation respectively [5, 6]. In addition, TOPK has been shown to interact with some tumor suppressor proteins, including the human tumor suppressor hDlg (the human homologue of the *Drosophila Discs-large* (Dlg) tumor suppressor protein) [7] and p53 [8]. TOPK has been found overexpressed in highly proliferating normal tissues, fetal tissues and in several human cancers [9-16]. However, as far as we know, this is the first study evaluating the expression and prognostic significance of TOPK in GC. We aim to correlate TOPK expression

## TOPK is associated with poor prognosis in gastric cancer

with clinicopathologic parameters and to assess its prognostic significance in GC.

### Materials and methods

#### *Tumor samples*

The 101 paraffin-embedded specimens were collected from 79 GC patients who were surgically tumor-resected at the Third Affiliated Hospital of Harbin Medical University from January 2004 to December 2005, and were grouped as non-cancerous mucosa (n=22) and primary carcinoma (n=79). No patient was treated with preoperative chemotherapy or radiotherapy. According to the AJCC classification, there were 15 stage I patients, 20 stage II patients, 34 stage III patients, and 10 stage IV patients. All patients were followed up to August 2010 except those 56 patients who died before then. The follow-up time ranged from 1 to 79 months (mean 30.2 months). The pathological data were evaluated according to the 7th edition of the American Joint Committee on Cancer (AJCC) of GC. The Hospital Ethics Committee granted permission for this study.

#### *Immunohistochemistry*

The paraffin-embedded sections (4  $\mu$ m) were deparaffinized and rehydrated through a series of xylene and ethanol rinses. Then, they were submerged in EDTA (pH 9) and exposed to microwave heating to retrieve their antigenicity. Endogenous peroxidase activity was blocked by incubating sections in 0.5% H<sub>2</sub>O<sub>2</sub> solution for 30 min. After rinsing with phosphate-buffered saline (PBS), the sections were incubated with TOPK antibodies (Proteintech Group, 16110-1-AP, diluted at 1:100) at 4°C overnight. They were subsequently incubated with Streptavidin-horseradish peroxidase (HRP) complex for 30 min at room temperature. After visualization of the reaction with the diaminobenzidine (DAB) chromogen, all of them were counterstained with hematoxylin. Negative controls were composed of tissue sections incubated with PBS instead of the primary antibodies. Positive specimens exhibited cytoplasmic staining with little nuclear staining, while negative specimens exhibited no nuclear or cytoplasmic staining. The immunohistochemistry (IHC) score of each specimen was represented by the percentage of positive-stained cells: -, no or less than 5% cells stained; +, 6% to 30% of cells stained, + +,

31-50% of cells stained, + + +, 51%-75% of cells stained, and + + + +, more than 75% of cells stained.

#### *Cells and reagents*

Human gastric cancer cell lines SGC7901 were purchased from American Type Culture Collection and cultured in RPMI-1640 medium (Invitrogen, Carlsbad, CA, USA) supplemented with 10% fetal bovine serum and 1% penicillin/streptomycin. Primary antibodies (dilutions) used include anti-TOPK (1:1000, Protein-tech Group, Wuhan, China), anti- $\beta$ -actin (1:1000, Boster Bioengineering, Wuhan, China).

#### *Transfection*

50 nM of TOPK-specific siRNA were transfected into cells using lipofectamine 2000 reagent (Invitrogen). The TOPK-specific siRNA sequence (siTOPK: sense 5'-GGAGGAGAAUGGUGUU-AUU dTdT-3'; antisense 5'-AAUAACACCAUUC-UCCUCC dTdT-3') was purchased from Ribobio (Guangzhou, China). A scrambled siRNA sequence was obtained as a negative control. At forty-eight hours after transfection, cells were harvested and subjected to a migration assay and the expression of TOPK was determined by quantitative real-time PCR and Western blot analysis.

#### *Quantitative real-time PCR (Q-RT-PCR)*

Total cell RNA was extracted with TRIzol reagent (Invitrogen, USA) according to the manufacturer's instructions and detected by Q-RT-PCR. A human GAPDH was used as an internal control. The primer sequences of TOPK and GAPDH were as follows: TOPK: 5'-TGAGGCTT-GTTACATTGGCACAG-3' (sense), 5'-AGCAGAAG-GACGATCTTTAGGGT-3' (antisense); GAPDH: 5'-GTGAAGGTCGGAGTCAACGG-3' (sense), 5'-CT-CCTGGAAGATGGTGATGGG-3' (antisense). The amount of TOPK mRNA expression is given by:  $2^{-\Delta\Delta CT}$  and data are represented as mean  $\pm$  s.d.

#### *Western blot*

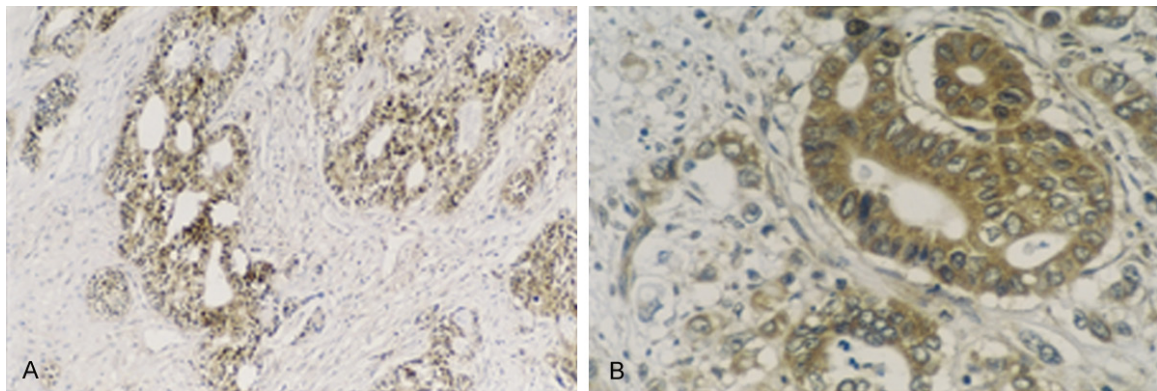
Cell lysates were made by standard methods. 15  $\mu$ l of each sample was then separated by sodium dodecyl sulfate-polyacrylamide gel electrophoresis (SDS-PAGE) and transferred to nitrocellulose membranes. Membranes were blocked with buffer (Tris buffered saline [TBS], 0.1% Tween 20, and 5% non-fat dry milk) for

## TOPK is associated with poor prognosis in gastric cancer

**Table 1.** Demographic data and survival in different stages of gastric cancer according to the AJCC classification

	Stage I (n=15)	Stage II (n=20)	Stage III (n=34)	Stage IV (n =10)	Total (n=79)
Gender					
Male	11	14	29	6	60
Female	4	6	5	4	19
Age (years) <sup>a</sup>	55.7 (10.4)	55.1 (11.6)	60.8 (10.6)	58.6 (11.99)	58.1 (11.1)
Follow-up period (months) <sup>a</sup>	57.9 (14.4)	45.3 (24.2)	14.9 (9.3)	10.4 (8.6)	30.2 (24.2)
Gross features					
Noninfiltrating	6	7	1	0	14
Infiltrating	9	13	33	10	65
Survival					
Yes	11	12	0	0	23
No	4	8	34	10	56

<sup>a</sup>Mean (standard deviation, SD).



**Figure 1.** Immunohistochemical staining of gastric cancer: anti-TOPK [magnification, ×100 (A), ×400 (B)], the positive staining was mainly in the cytoplasm of GC cells besides little nuclear staining.

1 h at room temperature, followed by hybridization with the primary antibody overnight at 4°C. After washing three times with TBST, the membranes underwent hybridization with the horseradish peroxidase-conjugated secondary antibody for 1 h at room temperature. After washing three times with TBST, signals were detected by chemiluminescence with the Western blotting luminal reagent (Santa Cruz, Biotechnology) according to the manufacturer's instructions.

### Statistical analyses

The statistical analyses were carried out with Statistical Analysis Software version 9.1 for Windows. Cochran-Mantel-Harnszel (CMH) test and chi-square analysis were used to detect correlations between variables. The follow-up time was defined as the period from the operation date to the last visit. Survival analysis was

performed by the Kaplan-Meier method, and the significance was determined by univariate log-rank test. The parameters that were significant in univariate analysis ( $P < 0.05$ ) were selected for the multivariate Cox regression model to assess the increment statistical power and independence of prognostic impact. All statistical tests were two-sided. A  $P$ -value  $< 0.05$  was considered statistically significant.

### Results

#### *TOPK is associated with invasiveness, metastasis and poor prognosis in gastric cancer*

To determine the prognostic value of TOPK expression, its immunoreactivity was assessed using 101 specimens from 79 gastric cancer patients (Table 1). TOPK was detectable for scoring in GC tumor cells. The localization of

## TOPK is associated with poor prognosis in gastric cancer

**Table 2.** Linear association between TOPK expression levels versus clinicopathological variables

Variables	Frequency (% of patients)					P value
	TOPK expression					
	- (n=6)	+ (n=4)	++ (n=24)	+++ (n=27)	++++ (n=18)	
<b>Gross features</b>						
Noninfiltrating	0 (0.00)	2 (14.29)	8 (57.14)	3 (21.43)	1 (7.14)	0.1635
Infiltrating	6 (9.23)	2 (3.08)	16 (24.62)	24 (36.92)	17 (26.15)	
<b>Differentiation</b>						
Poor/mucinous	6 (9.38)	2 (3.13)	18 (28.13)	23 (35.94)	15 (23.44)	0.8140
Well/moderate	0 (0.00)	2 (13.33)	6 (40.00)	4 (26.67)	3 (20.00)	
<b>pT classification</b>						
T1/2	2 (9.52)	2 (9.52)	10 (47.62)	5 (23.81)	2 (9.52)	0.0319
T3/4	4 (6.90)	2 (3.45)	14 (24.14)	22 (37.93)	16 (27.59)	
<b>pN classification</b>						
N0	3 (10.34)	1 (3.45)	13 (44.83)	10 (34.48)	2 (6.90)	0.0337
N1-N3	3 (6.00)	3 (6.00)	11 (22.00)	17 (34.00)	16 (32.00)	
<b>Peritoneal metastasis</b>						
Negative	6 (8.82)	3 (4.41)	21 (30.88)	22 (32.35)	16 (23.53)	0.6746
Positive	0 (0.00)	1 (9.09)	3 (27.27)	5 (45.45)	2 (18.18)	
<b>AJCC stage</b>						
I	2 (13.33)	0 (0.00)	9 (60.00)	4 (26.67)	0 (0.00)	0.1426
II	1 (5.00)	2 (10.00)	5 (25.00)	7 (35.00)	5 (25.00)	
III	3 (8.82)	1 (2.94)	4 (11.76)	14 (41.18)	12 (35.29)	
IV	0 (0.00)	1 (10.00)	6 (60.00)	2 (20.00)	1 (10.00)	

**Table 3.** Univariate analysis of prognostic markers in 79 patients with gastric cancer

Variable	$\beta$	$\chi^2$	P	HR	95% CI	
					Lower	Upper
TOPK	0.10256	0.6622	0.4158	1.108	0.865	1.418
pT classification	1.72288	17.6414	<.0001	5.601	2.507	12.514
pN classification	1.66036	22.9267	<.0001	5.261	2.666	10.381
AJCC stage	1.16801	45.4364	<.0001	3.216	2.290	4.516
Differentiation	-0.89937	4.9039	0.0268	0.407	0.184	0.902
Peritoneal metastasis	1.29536	13.6801	0.0002	3.652	1.838	7.256
Gross features	1.21123	6.6301	0.0100	3.358	1.335	8.442

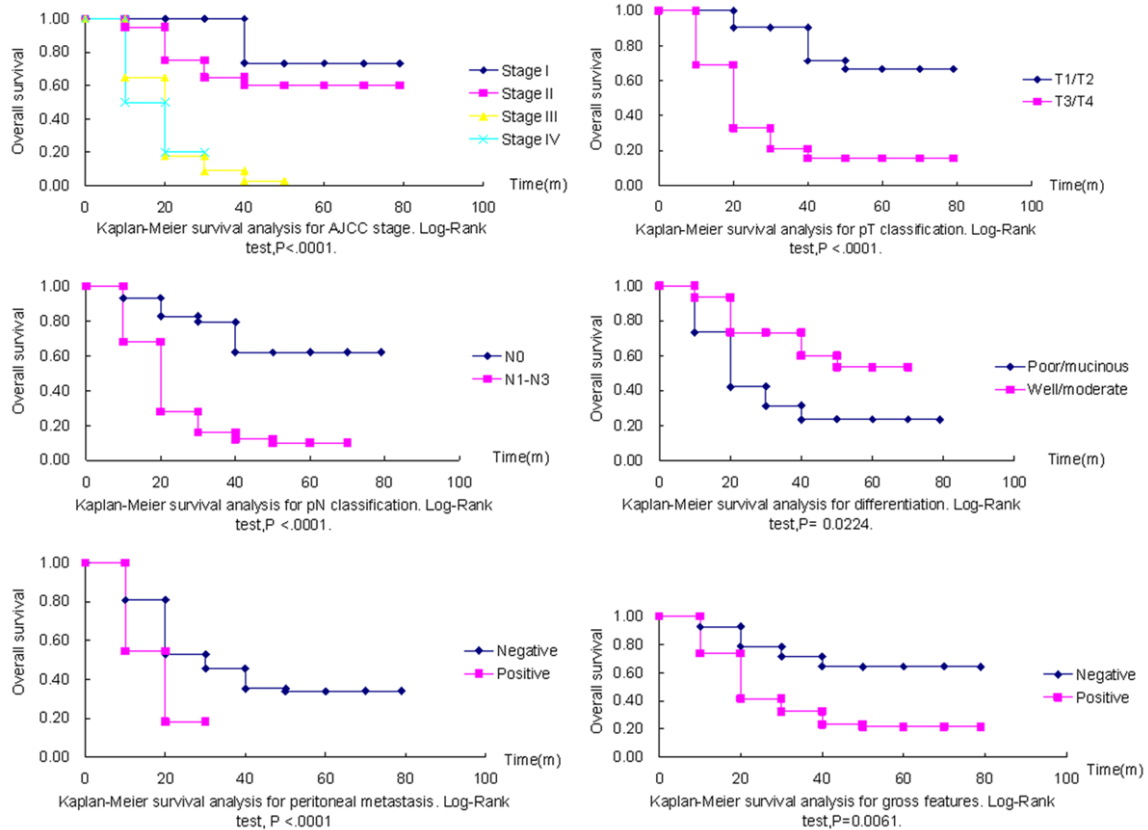
HR hazard ratio, CI confidence interval.

TOPK staining was mainly in the cytoplasm of tumor cells besides little nuclear staining (**Figure 1**). The positive frequency of TOPK in cancer cells was 92.4%, whereas no TOPK expression was detected in non-cancerous mucosa. TOPK expression increased significantly from non-cancerous mucosa to cancer. The correlations between the expression levels of TOPK and the clinicopathological variables are summarized in **Table 2**. With increasing TOPK expression, there was a significant increase in pT

classification (P=0.0319) and pN classification (P=0.0337). There was no correlation between TOPK expression and other clinicopathological variables in **Table 2**, such as gross features, differentiation, peritoneal metastasis and AJCC stage. The univariate analysis demonstrated that AJCC stage (P<0.0001), pT classification (P<0.0001), pN classification (P<0.0001),

differentiation (P=0.0268), peritoneal metastasis (P=0.0002) and gross features (P=0.0100) had an impact on overall survivals (**Table 3**). TOPK IHC score in tumor cells was not significantly associated with survival rate of the patients (P=0.4158). The Kaplan-Meier curves for correlations of clinical outcomes with the parameters are shown in **Figure 2**. The multivariate Cox regression analysis revealed that AJCC stage significantly affected the overall survivals was an independent predictor of sur-

## TOPK is associated with poor prognosis in gastric cancer



**Figure 2.** Kaplan-Meier survival curves for clinicopathological factors.

**Table 4.** Multivariate Cox regression analysis of prognostic markers in 79 patients with gastric cancer (Backward stepwise model)

Variable	$\beta$	$\chi^2$	P	HR	95% CI	
					Lower	Upper
AJCC stage	1.16801	45.4364	<.0001	3.216	2.290	4.516
I						
II+III+IV						

HR hazard ratio, CI confidence interval.

vival (**Table 4**). Taken together, our data show that overexpression of TOPK is associated with invasiveness, metastasis and poor prognosis in gastric cancer.

### *SiRNA-mediated knockdown of TOPK suppresses gastric cancer cell migration*

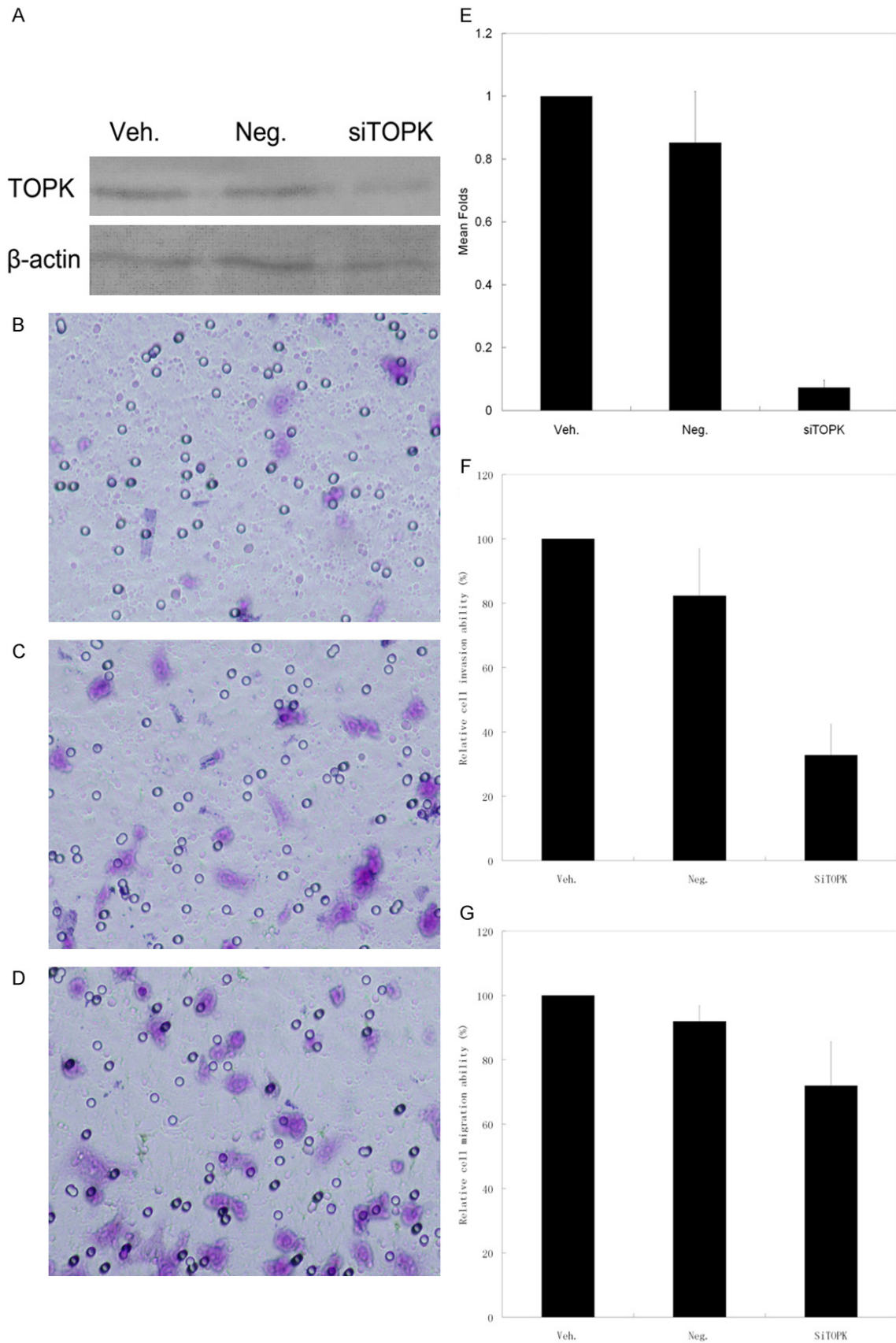
To further confirm that TOPK expression correlates with the invasiveness and metastasis of gastric cancer, we examined whether TOPK-specific siRNAs could affect cell migration in SGC7901 cells. We transiently transfected a

scrambled control siRNA (Neg.) and a siRNA directed against TOPK into SGC7901 cells and tested the effect of TOPK on cell migration. As expected, reductions of TOPK protein in SGC7901 cells were associated with decreases in cell invasion ( $P=0.0102$ ) and migration ( $P=0.0278$ ). Endogenous TOPK was suppressed in SGC7901 cells, which led to a great decrease in cellular migration as compared with the vehicle-treated or scrambled control cells (**Figure 3**).

### Discussion

The overexpression of TOPK has been observed in highly proliferating normal tissues, fetal tissues and in a variety of human cancers [9-17]. However, the expression and prognostic significance of TOPK in GC has not been evaluated. This study presents the first evidence to assess the expression and prognostic impact of TOPK in human GC. Wei et al. [18] found that TOPK

# TOPK is associated with poor prognosis in gastric cancer



## TOPK is associated with poor prognosis in gastric cancer

**Figure 3.** Knockdown of TOPK suppresses gastric cancer cell migration. SGC7901 cells were transiently transfected without (vehicle; Veh.) or with a scrambled siRNA (Neg.) or a TOPK-specific siRNA (siTOPK). Forty-eight hours after transfection, one portion of cells was harvested for detection of  $\beta$ -actin and TOPK expression by Western blot (A) and Q-RT-PCR analysis (E). The other portions of the cells were incubated in Matrigel-coated or uncoated transwell inserts for another 24 hours. The diagrams of invasion assay (F) and migration assay (G) are representative of relative migration fold as compared with vehicle control. Invasion assay in SGC7901 cells ( $\times 200$ ): siTOPK (B), Neg. (C), Veh. (D) All assays were performed in triplicate, independently repeated at least three times.

was overexpressed in lung adenocarcinoma specimens, which was correlated with the metastatic capability of tumors and predicted poor prognosis in patients with stage I lung adenocarcinoma. Park et al. [16] reported that TOPK was upregulated in breast cancer cells and knocking down the expression of TOPK led to growth suppression of breast cancer cell lines. By immunohistochemistry we found that non-cancerous mucosa had no detectable TOPK, whereas the positive frequency of TOPK in cancer cells was 92.4%. TOPK expression increased significantly from non-cancerous mucosa to cancer. This result is consistent with the idea that TOPK is a mitotic kinase and upregulated in vigorously proliferating cells during mitosis [7, 11, 14, 16]. At an early stage of mitosis, protein phosphatase 1 alpha (PP1 $\alpha$ ) is inactivated through phosphorylation at Thr320 by CDK1/cyclin B1 complex, which resulted in the activation of TOPK by autophosphorylation [19, 20]. Then, induced by CDK1 inactivation, the restored PP1 $\alpha$  gradually dephosphorylates and inactivates TOPK to the steady level [11, 19]. Nandi et al. [21] found that the regulation of TOPK is mostly due to binding of cell cycle-specific transcription factors E2F and CREB (cAMP-response element binding protein)/ATF to E2F (-146 bp) and CREB/ATF (-312 bp) binding sites within the TOPK promoter. However, due to diversified ways of regulating TOPK expression [7, 11, 17, 22], there are likely various mechanisms causing activation and overexpression of TOPK in gastric cancer.

TOPK has been reported earlier to be associated with invasion, metastasis and prognosis of various cancers [9, 18, 23]. He et al. [24] found that TOPK frequently expressed in cholangiocarcinoma but never expressed in hepatocellular carcinoma and the low expression of TOPK was linked to an unfavorable prognosis in patients with cholangiocarcinoma. Zlobec et al. [9] showed that TOPK expression combined with *KRAS* or *BRAF* mutations was related to poor prognosis in sporadic colorectal cancer. Wei et al. [18] demonstrated that TOPK promot-

ed migration, invasion, and clonogenic activity of lung cancer cells. Here, we presented supportive data that TOPK overexpression was positively correlated with pT classification and pN classification, which were prognosticators for poor survival of GC. In addition, by inhibiting expression of TOPK, we have demonstrated that TOPK can promote gastric cancer cell migration. These results also agree with previous studies showing that TOPK overexpression in stage I lung adenocarcinoma could be a prognostic predictor of reduced overall survival and time to recurrence [18]. Shih et al. [23] showed that TOPK might stimulate cell migration through the PI3K (phosphatidylinositol-3-kinase)/PTEN (phosphatase and tensin homolog)/AKT (protein kinase B)-dependent signaling pathway to facilitate metastasis of lung cancer cells. Other investigators showed that TOPK functioned as a regulator of p38 MAPK (mitogen-activated protein kinase), JNK (c-Jun N-terminal kinases) and ERK (extracellular signal-regulated kinases)/MAPK signaling pathway, which regulated cell proliferation, oncogenesis, differentiation, apoptosis, invasion and migration [3, 17, 25-29]. Ayllón et al. [30] observed that TOPK mediated cell motility in response to growth factor stimulation by activating p38 MAPK and DNA damage response through histone H2AX phosphorylation, which facilitated the recruitment of repair factors to the sites of damage [31]. This observation was supported by the findings that TOPK phosphorylated H2AX thereby contributing to the prevention of arsenite (As<sup>3+</sup>)-induced apoptosis in RPMI7951 melanoma cells [13]. Oh et al. [25] demonstrated that TOPK, which was an upstream regulator of UVB (ultraviolet B)-induced JNK activation, might activate JNK1 by directly phosphorylating JNK1 and synergistically interacting with the JIP1 (JNK-interacting protein 1) scaffolding complex to mediate H-Ras-induced cell transformation in skin cancers. Zhu et al. [17] found that TOPK phosphorylated ERK2 and vice versa, which promoted a positive feedback loop to increase kinase activity of both proteins thereby inducing trans-

## TOPK is associated with poor prognosis in gastric cancer

formation in colorectal cancer. Interestingly, studies of ER (estrogen receptor)-positive T47D breast cancer cells with PI3K mutations indicated that TOPK might play a role in mediating PI3K/Akt-sensitive MEK-independent ERK activation [32]. Besides, Hu et al. [33] reported that TOPK overexpression promoted tumor cell progression and resistance to chemotherapy-induced apoptosis through interference with the DNA-binding domain of p53 and consequent reductions in the cell-cycle regulatory proteins including p21.

This article shows that TOPK can be an excellent biomarker for gastric cancer and is correlated with invasiveness, metastasis and poor prognosis in patients with GC. Due to TOPK is involved in the growth, invasiveness, migration and DNA damage repair pathways of cancer cells, it may be a potential novel target for the development of antineoplastic therapeutics and to be used in combination with DNA damaging drugs [13, 30].

### Acknowledgements

This work was financially supported by the Natural Science Foundation of Heilongjiang Province, China (Grant No. QC2015096 and QC2012C019).

### Disclosure of conflict of interest

None.

**Address correspondence to:** Dr. Qifan Zhang, Department of Surgical Oncology, The Fourth Hospital of Harbin Medical University, Harbin 150001, China. Tel: +86-451-82579005; E-mail: qifanzhang@hotmail.com

### References

- [1] Parkin DM, Bray F, Ferlay J and Pisani P. Global cancer statistics, 2002. *CA Cancer J Clin* 2005; 55: 74-108.
- [2] Catalano V, Labianca R, Beretta GD, Gatta G, de Braud F and Van Cutsem E. Gastric cancer. *Crit Rev Oncol Hematol* 2009; 71: 127-64.
- [3] Abe Y, Matsumoto S, Kito K and Ueda N. Cloning and expression of a novel MAPKK-like protein kinase, lymphokine-activated killer T-cell-originated protein kinase, specifically expressed in the testis and activated lymphoid cells. *J Biol Chem* 2000; 275: 21525-31.
- [4] Abe Y, Takeuchi T, Kagawa-Miki L, Ueda N, Shigemoto K, Yasukawa M and Kito K. A mitotic kinase TOPK enhances Cdk1/cyclin B1-dependent phosphorylation of PRC1 and promotes cytokinesis. *J Mol Biol* 2007; 370: 231-45.
- [5] Cao K, Nakajima R, Meyer HH and Zheng Y. The AAA-ATPase Cdc48/p97 regulates spindle disassembly at the end of mitosis. *Cell* 2003; 115: 355-67.
- [6] Fukukawa C, Ueda K, Nishidate T, Katagiri T and Nakamura Y. Critical roles of LGN/GPSM2 phosphorylation by PBK/TOPK in cell division of breast cancer cells. *Genes Chromosomes Cancer* 2010; 49: 861-72.
- [7] Gaudet S, Branton D and Lue RA. Characterization of PDZ-binding kinase, a mitotic kinase. *Proc Natl Acad Sci U S A* 2000; 97: 5167-72.
- [8] Hu F, Gartenhaus RB, Eichberg D, Liu Z, Fang HB and Rapoport AP. PBK/TOPK interacts with the DBD domain of tumor suppressor p53 and modulates expression of transcriptional targets including p21. *Oncogene* 2010; 29: 5464-74.
- [9] Zlobec I, Molinari F, Kovac M, Bihl MP, Altermatt HJ, Diebold J, Frick H, Germer M, Horcic M, Montani M, Singer G, Yurtsever H, Zettl A, Terracciano L, Mazzucchelli L, Saletti P, Frattini M, Heinimann K and Lugli A. Prognostic and predictive value of TOPK stratified by KRAS and BRAF gene alterations in sporadic, hereditary and metastatic colorectal cancer patients. *Br J Cancer* 2010; 102: 151-161.
- [10] Taketsugu F, Yasuhito A, Takashi T, Norifumi U, Kazuhiro S, Haruyasu Y and Katsumi K. Expression and phosphorylation of TOPK during spermatogenesis. *Dev Growth Differ* 2005; 47: 637-644.
- [11] Matsumoto S, Abe Y, Fujibuchi T, Takeuchi T, Kito K, Ueda N, Shigemoto K and Gyo K. Characterization of a MAPKK-like protein kinase TOPK. *Biochem Biophys Res Commun* 2004; 325: 997-1004.
- [12] Dougherty JD, Garcia AD, Nakano I, Livingstone M, Norris B, Polakiewicz R, Wexler EM, Sofroniew MV, Kornblum HI and Geschwind DH. PBK/TOPK, a proliferating neural progenitor-specific mitogen-activated protein kinase. *J Neurosci* 2005; 25: 10773-10785.
- [13] Zykova TA, Zhu F, Lu C, Higgins L, Tatsumi Y, Abe Y, Bode AM and Dong Z. Lymphokine-activated killer T-cell-originated protein kinase phosphorylation of histone H2AX prevents arsenite-induced apoptosis in RPMI7951 melanoma cells. *Clin Cancer Res* 2006; 12: 6884-6893.
- [14] Simons-Evelyn M, Bailey-Dell K, Toretsky JA, Ross DD, Fenton R, Kalvakolanu D and Rapoport AP. PBK/TOPK is a novel mitotic kinase which is upregulated in Burkitt's lymphoma and other highly proliferative malignant cells. *Blood Cells Mol Dis* 2001; 27: 825-9.



## TOPK is associated with poor prognosis in gastric cancer

- [15] Nandi A, Tidwell M, Karp J and Rapoport AP. Protein expression of PDZ-binding kinase is up-regulated in hematologic malignancies and strongly downregulated during terminal differentiation of HL-60 leukemic cells. *Blood Cells Mol Dis* 2004; 32: 240-5.
- [16] Park JH, Lin ML, Nishidate T, Nakamura Y and Katagiri T. PDZ-binding kinase/T-LAK cell-originated protein kinase, a putative cancer/testis antigen with an oncogenic activity in breast cancer. *Cancer Res* 2006; 66: 9186-95.
- [17] Zhu F, Zykova TA, Kang BS, Wang Z, Ebeling MC, Abe Y, Ma WY, Bode AM and Dong Z. Bidirectional signals transduced by TOPK-ERK interaction increase tumorigenesis of HCT116 colorectal cancer cells. *Gastroenterology* 2007; 133: 219-31.
- [18] Wei DC, Yeh YC, Hung JJ, Chou TY, Wu YC, Lu PJ, Cheng HC, Hsu YL, Kuo YL, Chen KY and Lai JM. Overexpression of T-LAK cell-originated protein kinase predicts poor prognosis in patients with stage I lung adenocarcinoma. *Cancer Sci* 2012; 103: 731-8.
- [19] Park JH, Nishidate T, Nakamura Y and Katagiri T. Critical roles of T-LAK cell-originated protein kinase in cytokinesis. *Cancer Sci* 2010; 101: 403-11.
- [20] Kwon YG, Lee SY, Choi Y, Greengard P and Nairn AC. Cell cycle-dependent phosphorylation of mammalian protein phosphatase 1 by cdc2 kinase. *Proc Natl Acad Sci U S A* 1997; 94: 2168-73.
- [21] Nandi AK and Rapoport AP. Expression of PDZ-binding kinase (PBK) is regulated by cell cycle-specific transcription factors E2F and CREB/ATF. *Leuk Res* 2006; 30: 437-47.
- [22] Herrero-Martín D, Osuna D, Ordóñez JL, Sevillano V, Martins AS, Mackintosh C, Campos M, Madoz-Gúrpide J, Otero-Motta AP, Caballero G, Amaral AT, Wai DH, Braun Y, Eisenacher M, Schaefer KL, Poremba C and de Alava E. Stable interference of EWS-FLI1 in an Ewing sarcoma cell line impairs IGF-1/IGF-1R signalling and reveals TOPK as a new target. *Br J Cancer* 2009; 101: 80-90.
- [23] Shih MC, Chen JY, Wu YC, Jan YH, Yang BM, Lu PJ, Cheng HC, Huang MS, Yang CJ, Hsiao M and Lai JM. TOPK/PBK promotes cell migration via modulation of the PI3K/PTEN/AKT pathway and is associated with poor prognosis in lung cancer. *Oncogene* 2012; 31: 2389-400.
- [24] He F, Yan Q, Fan L, Liu Y, Cui J, Wang J, Wang L, Wang Y, Wang Z, Guo Y and Huang G. PBK/TOPK in the differential diagnosis of cholangiocarcinoma from hepatocellular carcinoma and its involvement in prognosis of human cholangiocarcinoma. *Hum Pathol* 2010; 41: 415-24.
- [25] Oh SM, Zhu F, Cho YY, Lee KW, Kang BS, Kim HG, Zykova T, Bode AM and Dong Z. T-lymphokine-activated killer cell-originated protein kinase functions as a positive regulator of c-Jun-NH2-kinase 1 signaling and H-Ras-induced cell transformation. *Cancer Res* 2007; 67: 5186-94.
- [26] Johnson GL and Lapadat R. Mitogen-activated protein kinase pathways mediated by ERK, JNK, and p38 protein kinases. *Science* 2002; 298: 1911-2.
- [27] Xia Y and Karin M. The control of cell motility and epithelial morphogenesis by Jun kinases. *Trends Cell Biol* 2004; 14: 94-101.
- [28] Goberdhan DC and Wilson C. JNK, cytoskeletal regulator and stress response kinase? A drosophila perspective. *Bioessays* 1998; 20: 1009-19.
- [29] Kim MS, Lee EJ, Kim HR and Moon A. p38 kinase is a key signaling molecule for H-Ras-induced cell motility and invasive phenotype in human breast epithelial cells. *Cancer Res* 2003; 63: 5454-61.
- [30] Ayllón V and O'connor R. PBK/TOPK promotes tumour cell proliferation through p38 MAPK activity and regulation of the DNA damage response. *Oncogene* 2007; 26: 3451-61.
- [31] Paull TT, Rogakou EP, Yamazaki V, Kirchgessner CU, Gellert M and Bonner WM. A critical role for histone H2AX in recruitment of repair factors to nuclear foci after DNA damage. *Curr Biol* 2000; 10: 886-95.
- [32] Aksamitiene E, Kholodenko BN, Kolch W, Hoek JB and Kiyatkin A. PI3K/Akt-sensitive MEK-independent compensatory circuit of ERK activation in ER-positive PI3K-mutant T47D breast cancer cells. *Cell Signal* 2010; 22: 1369-78.
- [33] Hu F, Gartenhaus RB, Eichberg D, Liu Z, Fang HB and Rapoport AP. PBK/TOPK interacts with the DBD domain of tumor suppressor p53 and modulates expression of transcriptional targets including p21. *Oncogene* 2010; 29: 5464-74.