

## Original Article

# Expression of miR-551b and its effect on apoptosis in human gastric carcinoma

Yanan Wang<sup>1</sup>, Xiangyu Fan<sup>1</sup>, Fang Xu<sup>1</sup>, Pei Zhang<sup>1</sup>, Yaning Wei<sup>2</sup>, Shujie Cheng<sup>3</sup>, Po Zhao<sup>4</sup>

Departments of <sup>1</sup>Pathology, <sup>2</sup>Oncology, <sup>3</sup>Surgery, Affiliated Hospital of Hebei University, Baoding 071000, Hebei, PR China; <sup>4</sup>Department of Pathology, PLA General Hospital, Beijing 100853, PR China

Received January 8, 2018; Accepted February 14, 2018; Epub May 1, 2018; Published May 15, 2018

**Abstract:** miR-551b has been reported to be involved in tumorigenesis, cell invasion, and metastasis in gastric cancer but the mechanism remains unclear. In this study, in an attempt to address this question, we examined expression of miR-551b in gastric tumors and adjacent normal tissue. We transfected SGC-7901 gastric cancer cells with miRNA non-sense sequences (NC group), miR-551b mimics (miR-551b mimic group), and miR-551b inhibitors (miR-551b inhibitor group) to investigate the role of miR-551b in autophagic apoptosis. In gastric tissue, our real-time PCR results revealed that expression of miR-551b was significantly downregulated and the relative expression of miR-551b ( $1.75 \pm 0.13$ ) was significantly lower than in normal tissue ( $2.47 \pm 0.38$ ) ( $P < 0.05$ ). In transfected SGC-7901 cells, compared with the NC and miR-551b inhibitor group, miR-551b expression level and apoptosis rate in miR-551b mimics group was significantly increased whereas proliferation and invasion rates were significantly decreased ( $P < 0.05$ ). Hoechst 33342 fluorescence staining showed that a large number of autophagosomes were detected in miR-551b mimic group, fewer in the NC group, and only a small number in miR-551b inhibitor group. Western blotting showed that expression levels of NF- $\kappa$ B, LC3 II, and Beclin 1 in miR-551b mimics group were significantly higher than in the NC group and miR-551b inhibitor group ( $P < 0.05$ ). Our findings suggest that miR-551b could inhibit proliferation, apoptosis, and invasion of gastric cancer cells and the action mechanism may be related to induction of gastric cancer cells autophagic apoptosis.

**Keywords:** miRNA, miR-551b, autophagic apoptosis, gastric cancer

## Introduction

Gastric cancer is a type of digestive tract malignancy with a high mobility rate, as about 934 thousand patients are newly diagnosed worldwide and incidence of the disease increases every year [1, 2]. Malignant biological activities such as tumor proliferation, invasion, and metastasis are the primary causes of treatment failure and high mortality rate [3].

Autophagy [4] is a natural, regulated, destructive mechanism of the cell that plays an important role in disassembling unnecessary or dysfunctional components, structural reconstruction, cell growth and development, and maintaining balance of protein metabolism and stability of intracellular environment, etc. miRNAs are small non-coding RNA molecules containing 19-24 nucleotides, a type of newly

discovered regulatory factor of oncogene or anti-oncogene. miRNA expression imbalance is involved in tumorigenesis of many cancer types. Previous studies have shown that miRNAs could influence the pathological process of tumors by regulating autophagy related protein expression [5].

In gastric tumors, miR-551 levels are more significantly downregulated than in normal tissue and decreased miR-551 expression has been found to promote cell invasion and metastasis in gastric carcinoma cell lines, indicating that miR-551 might play a role in regulating oncogene expression [6]. However, the mechanism of regulation is still unclear. Here, we investigated the role of miR-551b in autophagic apoptosis using human gastric carcinoma SGC-7901 cell line and provide the basis for finding new gastric cancer treatment targets.

## Materials and methods

### Sample collection

A total of 48 tumor tissues were collected between July 2014 and September 2015 from Affiliated Hospital of Hebei University. All of the patients were confirmed to have gastric cancer via pathological examination. Parts of the gastric cancer tissues were kept, for research purposes, during pathological assessments. As a control, adjacent normal tissues 10 cm apart from the edge of the tumors were also kept. Samples were rinsed several times with saline and stored in liquid nitrogen. This research was approved by our hospital's Ethics Committee and all patients provided written informed consent.

### Cell lines and reagents

Human gastric carcinoma SGC-7901 cell lines were bought from Shanghai Institutes for Biological Sciences. MTT, DMSO, and fetal bovine serum were all purchased from Sigma. RPMI-1640 medium and trypsin (0.25%) were obtained from Hyclone and cell lysis buffer and BAC protein quantification kit were received from TianGen Biotech (Beijing). Antibodies of NF- $\kappa$ B, LC3 II, Beclin 1, and anti-human  $\beta$ -actin rabbit antibody were acquired from Boster Biological Technology. miR-551b mimics, miR-551b inhibitors, miR-551b anti-sense strand, Lipofectamine 2000 transfection reagent, and Annexin VFITC/PI cell apoptosis staining kit were obtained from Invitrogen. TRIzol extraction kit and real-time PCR reagent mix were from Takara Bio (Dalian). PCR primers were synthesized by Sangon Biotech (Shanghai). Hoechst 33342 staining kit was attained from Kindu Biotech and the Transwell chamber was delivered by Costar.

### Experimental procedures

**miR-551b expression test:** Stored gastric cancer tissue and normal tissue were taken out of liquid nitrogen and ground thoroughly. TRIzol (1 mL/100 mg) and 150  $\mu$ L of phenol chloroform were then added and mixed followed by centrifugation at 15,000 rpm for 10 minutes. The upper layer was transferred into a new tube and mixed with 200  $\mu$ L of isopropanol, samples were centrifuged again for 10 minutes at 15,000 rpm, then the upper layer was discarded and precipitate was washed using 75% ethanol. For

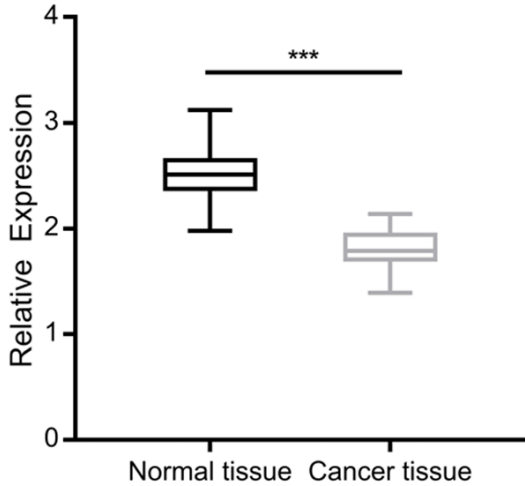
each sample, 5  $\mu$ g of total RNA was used to measure miR-551b expression level via real-time PCR. Sequences of forward and reverse primer were 5'-CTGAGCGACCCATACTTGG-3' and 5'GTGCAGGGTCCGAGGT-3', respectively, and the reaction mixture contained 7  $\mu$ L of 10 $\times$  PCR buffer, 0.5  $\mu$ L of Taq polymerase, 5  $\mu$ L of dNTP, 5  $\mu$ L of template, and 2  $\mu$ L of primers. Deionized water was used to fill reaction mix to the total volume of 50  $\mu$ L. PCR program was set as 94 $^{\circ}$ C for 3 minutes, 30 cycles of 94 $^{\circ}$ C 30 seconds, 62 $^{\circ}$ C 40 seconds, 72 $^{\circ}$ C 1 minute, followed by a 5 minute extension period at 74 $^{\circ}$ C. U6 was used as internal reference and the basis for calculating relative expression of miR-551b.

**SGC-7901 cell transfection:** SGC-7901 cells were thawed and placed in RPMI-1640 medium with 10% fetal bovine serum at 37 $^{\circ}$ C and 5% CO<sub>2</sub>. Cells at the exponential growth stage were collected and washed 3 times with serum-free medium and resuspended in medium without antibiotics. Cell density was adjusted to 1  $\times$  10<sup>6</sup> cells per well and incubated in 6 well plates. For the negative control group (NC), cells were treated with medium containing 5  $\mu$ L of miRNA anti-sense strand and 2  $\mu$ L of Lipofectamine 2000. In miR-551b mimics groups (Mimic), 5  $\mu$ L of miR-551b mimics (concentration: 20 nmol/L) and 2  $\mu$ L of Lipofectamine 2000 were added to 200  $\mu$ L of medium and the mixture was used to treat cells in 6 well plates. Lastly, for the miR-551b inhibitors group (Inhibitor), 5  $\mu$ L of miR-551b inhibitors (20 nmol/L) and 2  $\mu$ L of Lipofectamine 2000 were used. After transfection, all samples were kept in the incubator for another 5-6 hours at 37 $^{\circ}$ C. The medium was then swapped with the ones containing fetal bovine serum and antibiotics and incubated for an additional 24 hours.

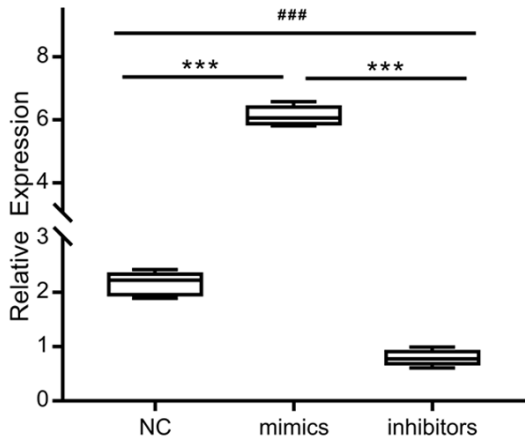
**MTT cell proliferation assay:** Transfected cells from all three groups were inoculated into 96 well plates with concentration of 1  $\times$  10<sup>7</sup> cells/L followed by addition of 10  $\mu$ L of 5 g/L MTT solution to each well at 12, 24, 36, 48, 60, and 72 hours and left to incubate for 4 hrs before discarding the medium. After transferring 150  $\mu$ L DMSO to each well, a microplate reader was used for all samples to measure absorbance at 570 nm.

**Transwell migration and invasion assay:** Serum-free medium was used to adjust cell

## miR-551b in gastric cancer



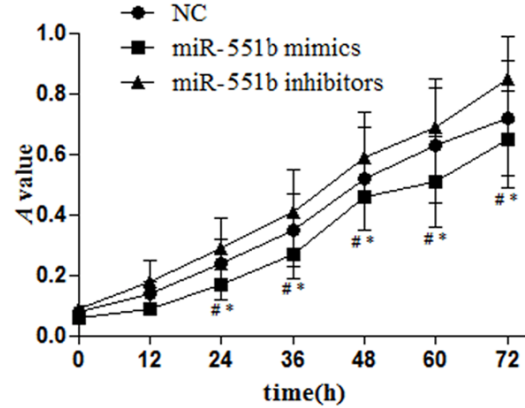
**Figure 1.** Expression levels of miR-551b in normal and gastric cancer tissues. \*\*\*:  $P < 0.001$ .



**Figure 2.** Expression levels of miR-551b in transfected cells of miR-551b mimics, miR-551b inhibitors group, and normal control group. \*\*\*:  $P < 0.001$ . ###:  $P < 0.001$ .

concentration to  $1 \times 10^9$  cells/L and  $150 \mu\text{L}$  was placed into every well in upper Transwell chamber whereas  $600 \mu\text{L}$  of RPMI-1640 medium with 20% fetal bovine serum was used to fill up the bottom part. Every sample group had 6 repeating wells set up. After incubation for 48 hours, 4% paraformaldehyde was used to fix the membrane. The inserts were then stained with crystal violet solution for 10 minutes followed by 3 repeated rinses using PBS. Subsequently, membranes were examined under light microscope where migrated cells were counted and cell invasion rate was calculated.

**Apoptosis analysis using flow cytometry:** Cells were collected 24 hours after transfection and

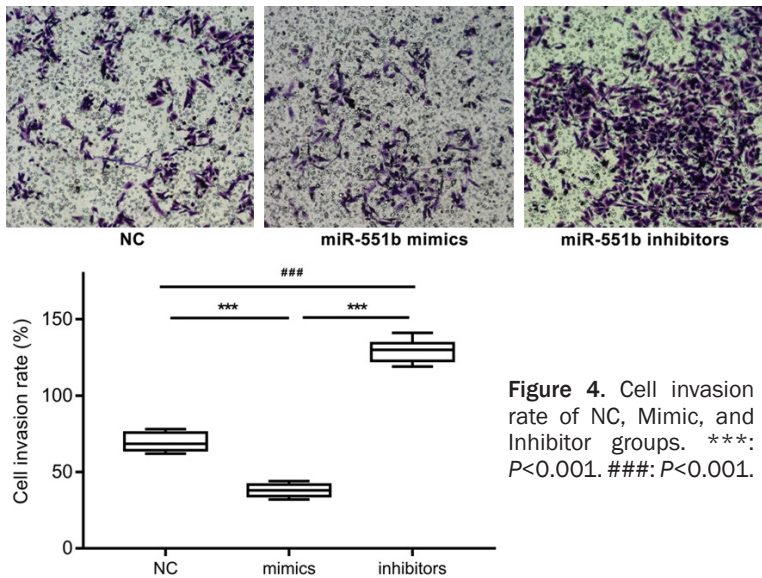


**Figure 3.** Proliferation ability changes in each cell group. Compared with miR-551b inhibitors group, # $P < 0.05$ , compared with NC group, \* $P < 0.05$ .

centrifuged at 5,000 rpm for 5 minutes. They were then fixed in 75% ethanol at  $4^\circ\text{C}$  for 24 hours. The following day, centrifugation was carried out at 1,500 rpm for 5 minutes, ethanol was discarded, and precipitate was washed with PBS solution. Cells were prepared according to the protocol of Annexin V/FITC/PI cell apoptosis staining kit. Flow cytometry analysis was performed and apoptosis rate was calculated.

**Hoechst 33342 staining:** Cells under exponential growth were inoculated into 6 well plate and incubated for 6 hours. They were then fixed using fix solution at  $4^\circ\text{C}$  overnight. Hoechst staining solution was later added and left for 10 minutes, then photos were taken under fluorescence microscope.

**Western blotting:** Protein expression of NF- $\kappa\text{B}$ , LC3 II, and Beclin 1 was analyzed using Western blot. Cells were lysed using  $100 \mu\text{L}$  of cell lysis buffer containing 1% PMSF followed by 20 minutes of centrifugation at  $4^\circ\text{C}$  (15,000 rpm). Upper layer was then transferred to the new tube and boiled to  $100^\circ\text{C}$  for 5 minutes. SDS-PAGE was used to separate proteins and they were transferred onto PVDF membrane. Current was set at 100 mA and lasted 40 minutes. Skim milk (5%) was applied to the membrane to block for 2 hours. Primary antibodies of NF- $\kappa\text{B}$ , LC3 II, Beclin 1, and  $\beta$ -actin were added in a ratio of 1:1000, 1:1000, 1:500, and 1:50, respectively, and then incubated overnight at  $4^\circ\text{C}$ . The following day, the membrane was washed 3 times with PBS and secondary antibody was added in 1:1000 ratio. The membrane was observed using chemiluminescent HRP substrate. Gray



**Figure 4.** Cell invasion rate of NC, Mimic, and Inhibitor groups. \*\*\*:  $P < 0.001$ . ###:  $P < 0.001$ .

*Alteration of proliferation ability in different cell groups*

Proliferation ability of cells in Mimic group was significantly suppressed in contrast to the NC and Inhibitor groups, between 24-72 hours ( $P < 0.05$ ), see **Figure 3**.

*Cell invasion ability alteration in different groups*

Cell invasion rates of NC, Mimic, and Inhibitor group were  $(52.01 \pm 2.01)\%$ ,  $(45.37 \pm 1.72)\%$ , and  $(94.47 \pm 3.07)\%$ , respectively. Cells in the Mimic group had significantly lower invasion rate

than that of NC and Inhibitor group ( $P < 0.05$ ) whereas invasion rate was greatly increased in Inhibitor group ( $P < 0.05$ ), see **Figure 4**.

value of 3 target protein bands was measured and compared with that of  $\beta$ -actin, then finally relative protein expression was calculated.

*Statistical analysis*

SPSS 19.0 software was used to analyze experimental data. All quantitative values are shown as mean  $\pm$  standard deviation ( $x \pm s$ ). Means of multiple groups were compared using one-way ANOVA and multiple group comparisons were made using Student-Newman-Keuls method. Statistical significance was defined as  $P < 0.05$ .

**Results**

*miR-551b expression in gastric cancer and normal tissues*

miR-551b was downregulated in gastric cancer tissue. The relative expression level was  $1.75 \pm 0.13$ , significantly lower than that of normal gastric tissue ( $2.47 \pm 0.38$ ,  $P < 0.05$ ) (**Figure 1**).

*miR-551b expression in transfected cells of miR-551b mimics and miR-551b inhibitors group*

Compared with NC and Inhibitor groups, significant higher expression level of miR-551b in the Mimic group was observed ( $P < 0.05$ ) whereas lower level of miR-551b was detected in Inhibitor group (**Figure 2**). This indicates that transfection was successful as expected, miR-551b mimics and miR-551b inhibitor functioned well.

*Cell apoptosis rate of each group*

Cell apoptosis rate of each group differed greatly. NC group had a rate of  $(44.05 \pm 16.21)\%$ ,  $(72.31 \pm 22.79)\%$  for Mimic group, and  $(35.30 \pm 11.27)\%$  for the Inhibitor group. Compared with the NC and Inhibitor group, the apoptosis rate was dramatically elevated with increased expression of miR-551b ( $P < 0.05$ ) whereas the rate was much lower in Inhibitor group ( $P < 0.05$ ), see **Figure 5**.

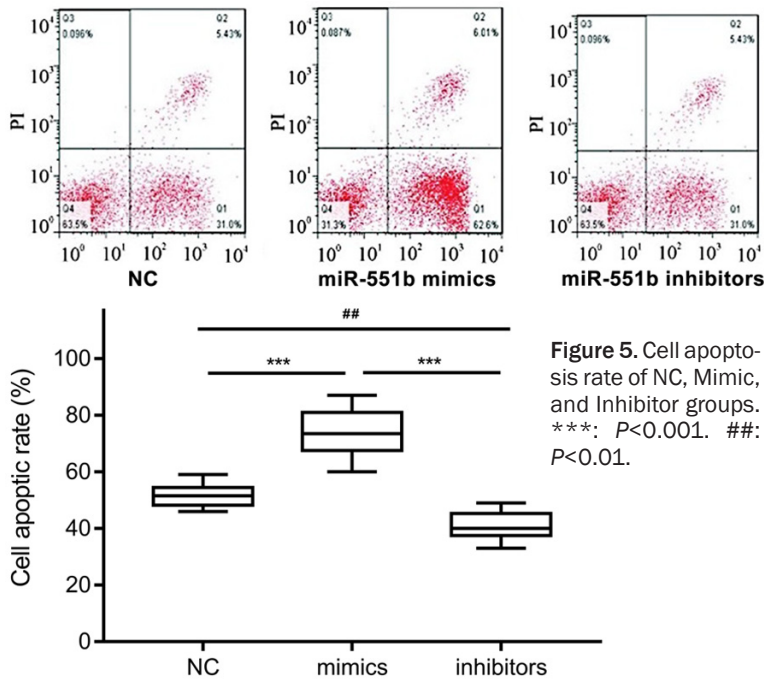
*Morphological changes of cell autophagy of each cell group*

According to Hoechst 33342 fluorescent staining, the Mimic group had a large amount of autophagosome (bright blue) whereas only a limited number of autophagic vacuoles could be observed in the miR-551b inhibitor group (**Figure 6**).

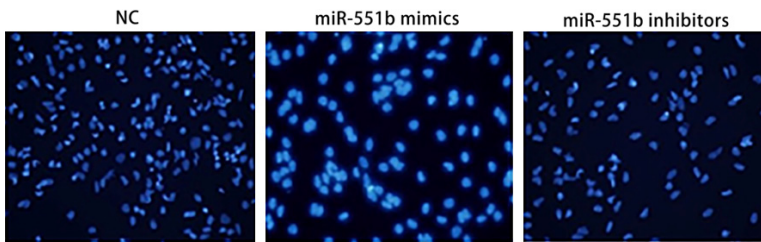
*Protein expression of NF- $\kappa$ B, LC3 II, and Beclin 1 in different cell groups*

In comparison with NC and Inhibitor groups, NF- $\kappa$ B, LC3 II, and Beclin 1 expression were significantly upregulated in Mimic group ( $P < 0.05$ ) and their expression was suppressed in Inhibitor group when compared with NC ( $P < 0.05$ ), see **Figure 7**.

## miR-551b in gastric cancer



**Figure 5.** Cell apoptosis rate of NC, Mimic, and Inhibitor groups. \*\*\*:  $P < 0.001$ . ##:  $P < 0.01$ .



**Figure 6.** Cell autophagy morphological changes of different cell groups with Hoechst 33342 fluorescent staining.

### Discussion

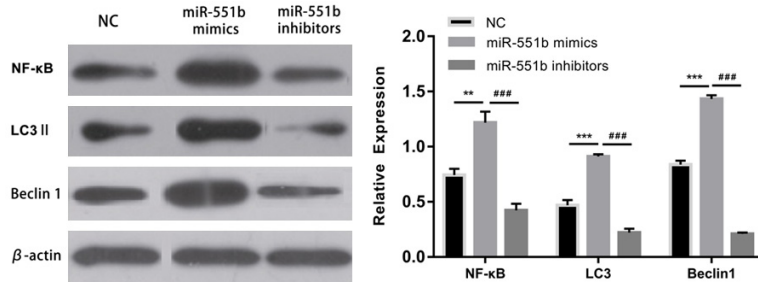
miRNAs [7, 8] are a type of newly discovered small non-coding RNAs that regulate target protein expression at the transcription and translation level. Although short in length and limited in number, it effects large amounts of gene expression and has been proven to play an important regulatory role in tumorigenesis and tumor development [9]. Several miRNAs such as miR-29a, miR-15a, miR-124, and miR-551b have been discovered and found to be associated with gastric cancer. Xin Wen et al. found that miR-551b expression in gastric cancer tissue was abnormal and it could be used as a potential biomarker for cancer diagnosis and prognosis [10]. Min Ye et al. speculated that miR-551b may be involved in gastric cancer development with functions that were similar to anti-oncogenes, with suppressed

miR-551b expression leading to faster cancer development [11]. In our current study, we examined the expression level of miR-551b in gastric cancer and normal tissues. The results show that miR-551b is downregulated in tumors and has significantly lower expression level than that of normal tissue, indicating that miR-551b could serve as a negative regulator during gastric cancer development. Chen et al. had similar observations after testing 40 tumors and normal tissues, levels of miR-551b dropped significantly in tumors and its expression was negatively correlated to tumor size, severity of invasion, and metastasis. He also suggested that miR-551b may be involved in invasion and metastasis of gastric cancer, as a cancer suppressive factor [12].

According to previous studies, miRNAs are closely related to a number of cell functions such as tumor proliferation, drug resistance, invasion, and metastasis. For example, miR-124 was found to be involved

in gastric cancer development and miR-15a possibly plays a role in cancer cell proliferation and invasion [13, 14]. In our research, we took SGC-7901 cell line as the object of study and transfected cells with miR-551b mimics, miR-551b inhibitors, and miR-551b anti-sense strands, separately. Real-time PCR showed increased expression of miR-551b in the Mimic group and decreased level in Inhibitor group, proving that transfection was successful. Further analysis revealed that by comparing with the NC and the Inhibitor group, cells in the Mimic group had significantly lower proliferation and invasion rate with increased percentage of apoptosis. Thus, our findings confirm that miR-551b plays the role of tumor suppressor in gastric cancer cells. Ding et al. showed that in colon tumors, miR-551b was also significantly downregulated compared with normal tissue and its expression level was negative

## miR-551b in gastric cancer



**Figure 7.** Expression levels of NF- $\kappa$ B, LC3 II, and Beclin 1 in different cell groups. Western blot was used to determine the expression level of related proteins in each group. \*\*:  $P < 0.01$ . \*\*\*:  $P < 0.001$ . ###:  $P < 0.001$ .

correlated with clinical staging and lymphatic metastasis [15]. Wei et al. transfected miR-551b mimics into gastric cancer cells and discovered that it could restrain tumor cell invasion and metastasis by suppressing PRL-3 expression [16].

Autophagy is a type of degradation and recycling system that exists in eukaryotic cells. The main process involves engulfing cytoplasmic constituents by isolating them from the rest of the cell within the autophagosome and degrading and recycling the contents after fusing with lysosomes. Autophagy has been seen as an adaptive response to stress and could be induced by factors such as starvation and oxidation [17]. Its detailed mechanism is still unclear but it is speculated to be related to the imbalance of cell metabolism. Previous experiments have indicated that clinical treatments like chemotherapy and radiotherapy can activate autophagy activity and increase adaptability to the environment stimuli [18] but, like a double-edged sword, excessive autophagy could also lead to autophagic apoptosis. Therefore, studying autophagy related signaling pathways is vitally important. Research has proven that by regulating autophagy related protein expression, miRNA has the ability to influence the pathological process of tumors [19]. Our results revealed that cells of the Mimic group had a considerable amount of autophagosome whereas only a limited number of autophagosome were detected in Inhibitor group. Cell membrane structure in the Mimic group was vague and apoptosis rate was high, therefore, miR-551b can evidently trigger gastric cancer cells to enter autophagic apoptosis.

NF- $\kappa$ B is a protein complex that controls transcription of DNA. Once activated, it could par-

ticipate in programmed cell death of tumor cells. Ho et al. showed that upregulation of NF- $\kappa$ B expression can be induced by chemo and radio therapy and rate of cell death could also be promoted [20]. LC3 II protein is located at the inner membrane of autophagosome. Activating LC3 precursor protein leads to the formation of LC3 I, then the exposed glycine residue of LC3 I binds to phosphatidyl

ethanolamine on the inner membrane of autophagosome to form LC3 II. Therefore, the quantity of LC3 II can be used in turn to reflect the amount of existing autophagosome [21]. Beclin 1 is an important protein in cell autophagy regulation [22]. By binding to its corresponding receptor PI3K3C to form the Beclin 1/PI3K3C complex, it activates autophagy related signaling pathways and regulates cell autophagy process. Our work has shown that in miR-551b mimics group, expression level of NF- $\kappa$ B, LC3 II, and Beclin 1 were all increased, indicating that NF- $\kappa$ B may be involved in cell autophagic apoptosis by regulating the expression of autophagy-related factors.

Overall, miR-551b has the ability to suppress a number of biological characteristics such as proliferation, apoptosis, and invasion in gastric tumor cells, possibly by promoting autophagic apoptosis. This discovery may provide a new target for future gastric cancer treatments.

### Acknowledgements

This work was supported by the National Natural Science Foundation of China (No. 81672706).

### Disclosure of conflict of interest

None.

**Address correspondence to:** Dr. Po Zhao, Department of Pathology, PLA General Hospital, 18 Fuxing Road, Beijing 100853, PR China. Tel: +86 13621365889; E-mail: Zhaopo301@163.com; Dr. Shujie Cheng, Department of Surgery, Affiliated Hospital of Hebei University, 212 East Yuhua Road, Baoding 071000, Hebei, PR China. Tel: +86 3125981663; E-mail: 848900149@qq.com

## References

- [1] Van Cutsem E, Dicato M, Geva R, Arber N, Bang Y, Benson A, Cervantes A, Diaz-Rubio E, Ducreux M, Glynne-Jones R, Grothey A, Haller D, Haustermans K, Kerr D, Nordlinger B, Marshall J, Minsky BD, Kang YK, Labianca R, Lordick F, Ohtsu A, Pavlidis N, Roth A, Rougier P, Schmoll HJ, Sobrero A, Tabernero J, Van de Velde C, Zalcborg J. The diagnosis and management of gastric cancer: expert discussion and recommendations from the 12th ESMO/World congress on gastrointestinal cancer, Barcelona, 2010. *Ann Oncol* 2011; 22 Suppl 5: v1-9.
- [2] Hanisch E, Batsis C. Clinicopathologic characteristics of colorectal cancer patients with synchronous and metachronous gastric cancer. *World J Surg* 2011; 35: 700-701.
- [3] Ramachandran L, Manu KA, Shanmugam MK, Li F, Siveen KS, Vali S, Kapoor S, Abbasi T, Surana R, Smoot DT, Ashktorab H, Tan P, Ahn KS, Yap CW, Kumar AP, Sethi G. Isorhamnetin inhibits proliferation and invasion and induces apoptosis through the modulation of peroxisome proliferator-activated receptor  $\gamma$  activation pathway in gastric cancer. *J Biol Chem* 2012; 287: 38028-38040.
- [4] Lassen KG, Kuballa P, Conway KL, Patel KK, Becker CE, Peloquin JM, Villablanca EJ, Norman JM, Liu TC, Heath RJ, Becker ML, Fagbami L, Horn H, Mercer J, Yilmaz OH, Jaffe JD, Shamji AF, Bhan AK, Carr SA, Daly MJ, Virgin HW, Schreiber SL, Stappenbeck TS, Xavier RJ. Atg16L1 T300A variant decreases selective autophagy resulting in altered cytokine signaling and decreased antibacterial defense. *Proc Natl Acad Sci U S A* 2014; 111: 7741-7746.
- [5] Gibbings D, Mostowy S, Jay F, Schwab Y, Cosart P, Voinnet O. Selective autophagy degrades DICER and AGO2 and regulates miRNA activity. *Nat Cell Biol* 2012; 14: 1314-1321.
- [6] Li Z, Cao Y, Jie Z, Liu Y, Li Y, Li J, Zhu G, Liu Z, Tu Y, Peng G, Lee DW, Park SS. miR-495 and miR-551a inhibit the migration and invasion of human gastric cancer cells by directly interacting with PRL-3. *Cancer Lett* 2012; 323: 41-47.
- [7] Klefogiannis D, Korfiati A, Theofilatos K, Likothanassis S, Tsakalidis A, Mavroudi S. Where we stand, where we are moving: surveying computational techniques for identifying miRNA genes and uncovering their regulatory role. *J Biomed Inform* 2013; 46: 563-573.
- [8] Barvkar VT, Pardeshi VC, Kale SM, Qiu S, Rollins M, Datla R, Gupta VS, Kadoo NY. Genome-wide identification and characterization of microRNA genes and their targets in flax (*linum usitatissimum*): characterization of flax miRNA genes. *Planta* 2013; 237: 1149-1161.
- [9] Huang X, Xu S, Chu H. Expression of miRNA Let-7 and Lin28 in sporadic acoustic neuroma and its significance. *Acta Medicinæ Universitatis Scientiæ ET Technologiæ Huazhong* 2013; 42: 520-524.
- [10] Wen X, Zhai D, Wang F, Xu J. miR-551b-3p decreases in gastric cancer tissue and inhibits the proliferation, migration and invasion of gastric cancer cell line HGC-27. *Basic and Clinical Medicine* 2016; 36: 610-614.
- [11] Ye M, Nie YQ, Chen X, Du YL, Lin Y. Differential expressions of microRNAs in gastric carcinoma tissues. *Chinese Journal of Biomedical Engineering* 2011; 17: 403-406.
- [12] Chen Z, Liu X, Liu M, Liu X, Jia J, Ji R, Guo Q, Zhou Y. Expression of miR-551b-3p in gastric cancer cell lines and tissues and its clinical significance. *Zhonghua Zhong Liu Za Zhi* 2014; 36: 903-904.
- [13] Kumar S, Keerthana R, Pazhanimuthu A, Perumal P. Overexpression of circulating miRNA-21 and miRNA-146a in plasma samples of breast cancer patients. *Indian J Biochem Biophys* 2013; 50: 210-214.
- [14] Zadran S, Remacle F, Levine RD. MiRNA and mRNA cancer signatures determined by analysis of expression levels in large cohorts of patients. *Proc Natl Acad Sci U S A* 2013; 110: 19160-19165.
- [15] Ding LF, Jiang Z, Chen QY, Qin R, Fang Y, Li H. A functional variant at miR-520a binding site in PIK3CA alters susceptibility to colorectal cancer in a Chinese Han population. *China Oncology* 2015; 25: 184-189.
- [16] Wei WY, Cao WL, Zhan ZX, Yu H, Xie YB, Xiao Q. The effect of miR-1284 over-expression on gene expression profiling and invasion/metastasis of human gastric cancer SGC-7901 cells. *China Oncology* 2015; 25: 659-664.
- [17] Salminen A, Kaarniranta K, Kauppinen A. Beclin 1 interactome controls the crosstalk between apoptosis, autophagy and inflammatory activation: impact on the aging process. *Ageing Res Rev* 2013; 12: 520-534.
- [18] Khan MI, Mohammad A, Patil G, Naqvi SA, Chauhan LK, Ahmad I. Induction of ROS, mitochondrial damage and autophagy in lung epithelial cancer cells by iron oxide nanoparticles. *Biomaterials* 2012; 33: 1477-1488.
- [19] McAfee Q, Zhang Z, Samanta A, Levi SM, Ma XH, Piao S, Lynch JP, Uehara T, Sepulveda AR, Davis LE, Winkler JD, Amaravadi RK. Autophagy inhibitor Lys05 has single-agent antitumor activity and reproduces the phenotype of a genetic autophagy deficiency. *Proc Natl Acad Sci U S A* 2012; 109: 8253-8258.
- [20] Ho HH, Chang CS, Ho WC, Liao SY, Lin WL, Wang CJ. Gallic acid inhibits gastric cancer cells metastasis and invasive growth via in-

## miR-551b in gastric cancer

- creased expression of RhoB, downregulation of AKT/small GTPase signals and inhibition of NF- $\kappa$ B activity. *Toxicol Appl Pharmacol* 2013; 266: 76-85.
- [21] Hanna RA, Quinsay MN, Orogo AM, Giang K, Rikka S, Gustafsson ÅB. Microtubule-associated protein 1 light chain 3 (LC3) interacts with Bnip3 protein to selectively remove endoplasmic reticulum and mitochondria via autophagy. *J Biol Chem* 2012; 287: 19094-19104.
- [22] Salminen A, Kaarniranta K, Kauppinen A, Ojala J, Haapasalo A, Soininen H, Hiltunen M. Impaired autophagy and APP processing in Alzheimer's disease: the potential role of Beclin 1 interactome. *Prog Neurobiol* 2013; 106-107: 33-54.